

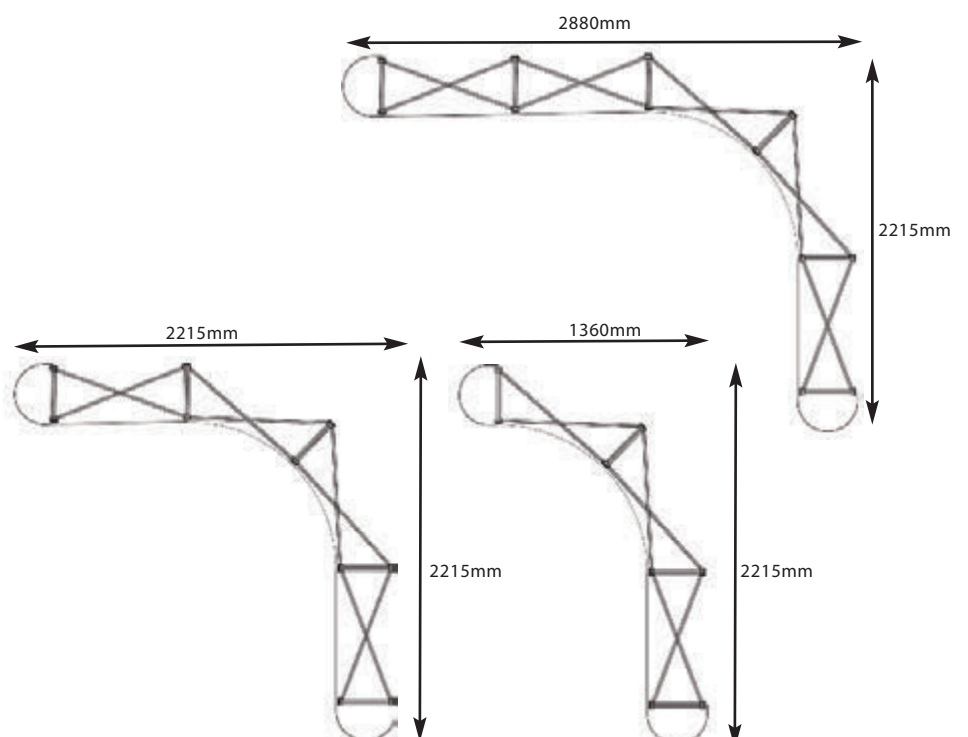
L-Shaped Pop-up



Light-weight highly versatile display system, ideal for exhibitions and trade fairs

features and benefits

- Quality anodised finish
- Self-locating 'smart' magnetic locking arms and low profile mag bars
- D-end graphic panels also fit the Quick Tower
- Available in a combination of quad sizes from 3x3 to 3 x 5 freestanding exhibition displays
- 3 quad graphic height 2225mm approx
- Accessories include choice of Lighting and Transit cases



Please note: That each L-shaped Pop-up has 2 curved panels on each frame. Rear graphics can only be fitted to straight sections

Assembly Instructions

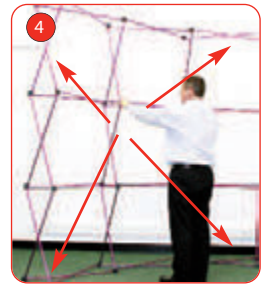
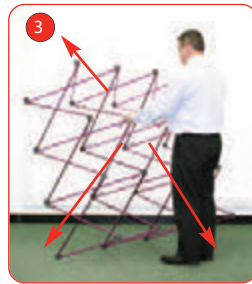
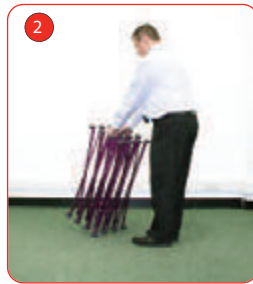
Artwork Sizes L Shape Pop Up Stands

3x3 Total graphic size 3353 x 2225 high no bleed or crops please! Curved panels are 637mm wide. Straight panels 733mm wide and the "D" end caps are 673mm wide

3x4 Total graphic size 4086 x 2225 high no bleed or crops please! Curved panels are 637mm wide. Straight panels 733mm wide and the "D" end caps are 673mm wide

3x5 Total graphic size 4819 x 2225 high no bleed or crops please! Curved panels are 637mm wide. Straight panels 733mm wide and the "D" end caps are 673mm wide

Pop-up assembly



Take the frame, ensuring that the hanging studs are at the top. Stand the frame on the floor (2) and open up (3) until the locking arms lock the frame securely into place (4)



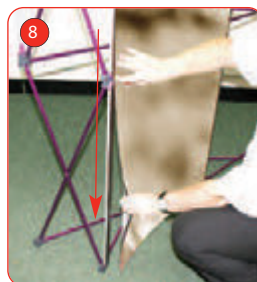
Add the mag bars onto the frame for front, D-ends and if applicable, the rear.



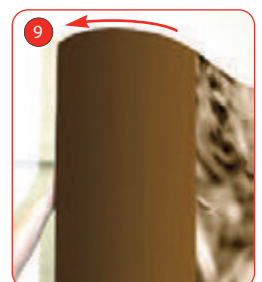
Ensure the mag bars lock onto the magnetic hubs securely.



Carefully hook the top hanger onto the studs of the top node.



Smooth the graphic onto the mag bars, ensuring that it sits flat and is aligned to the centre line of each mag bar.



Attach the D-End panel front vertical edge. Curve the graphic round to the back and attach the back vertical edge to complete.



Repeat steps 8 and 9 for the rest of the graphic panels. This applies to front and rear graphics if applicable.

