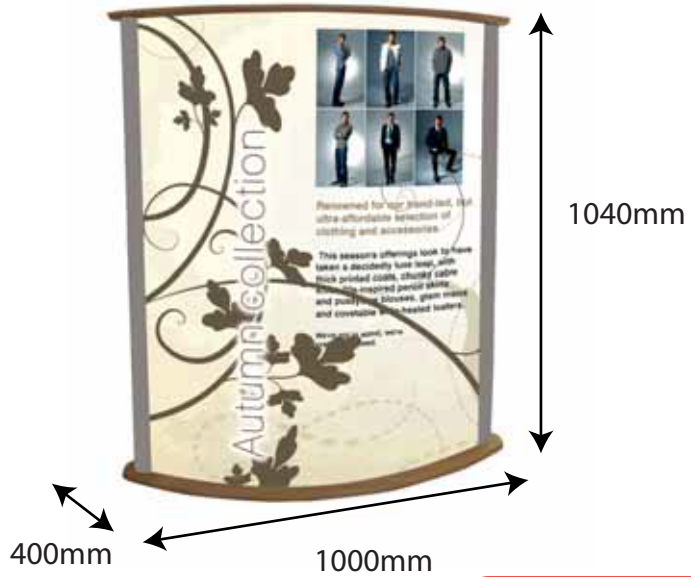


Totem Light boxes

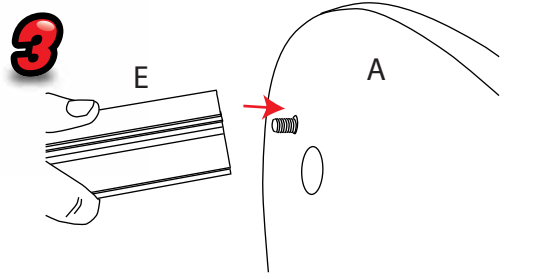
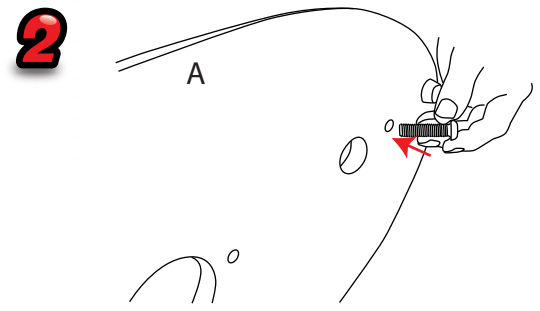
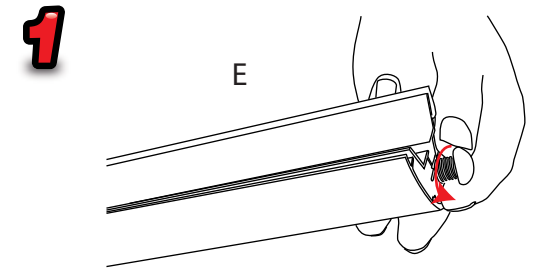
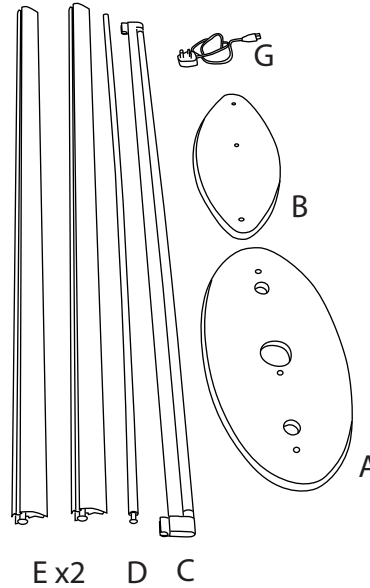


Recommended Substrate:
2mm Opal HIPS

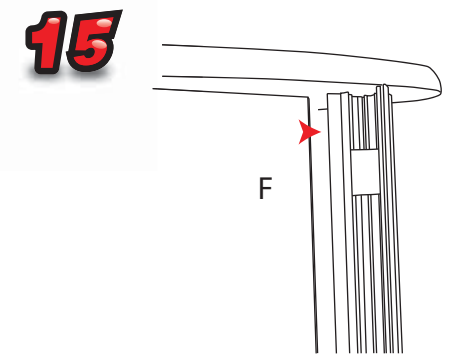
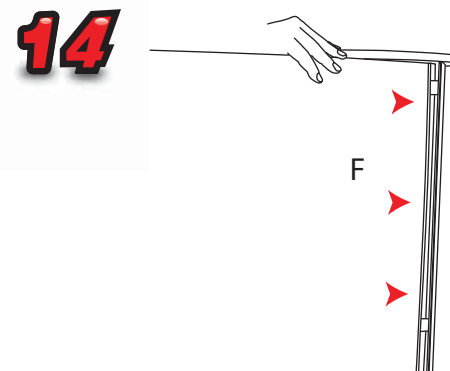
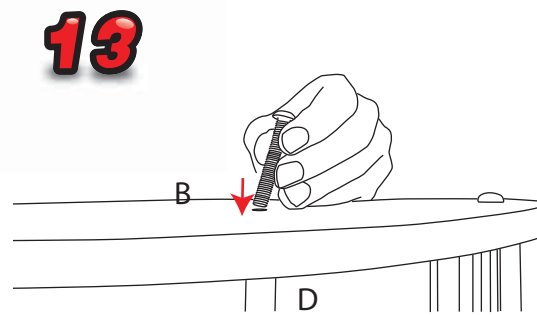
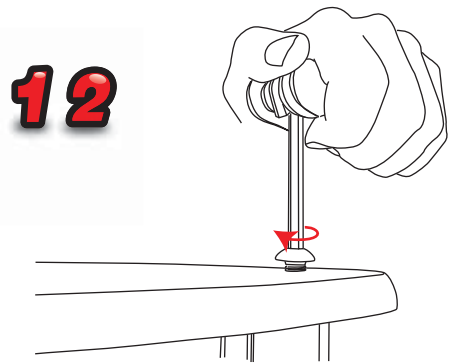
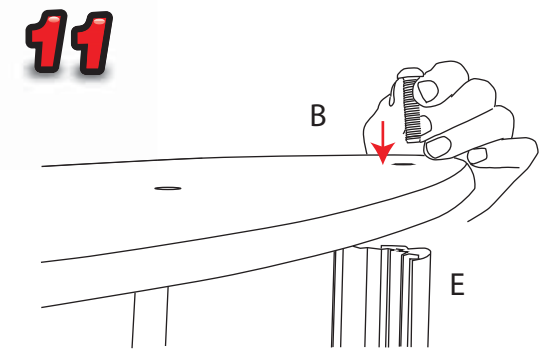
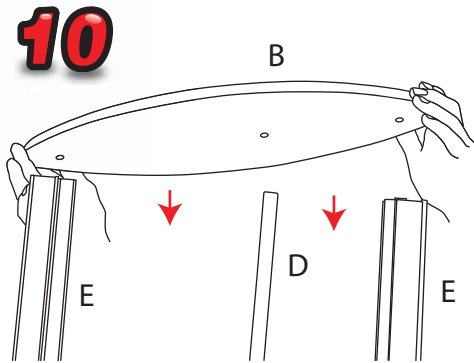
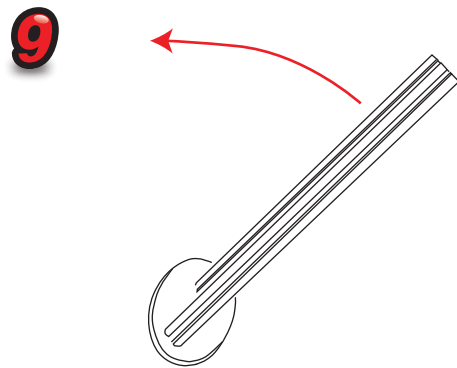
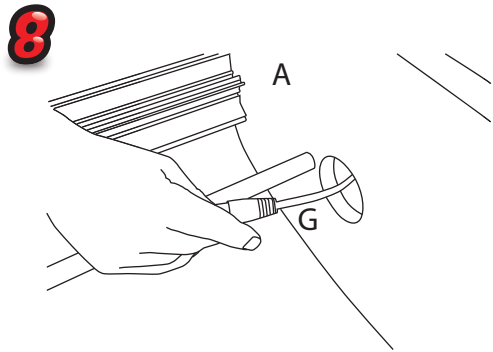
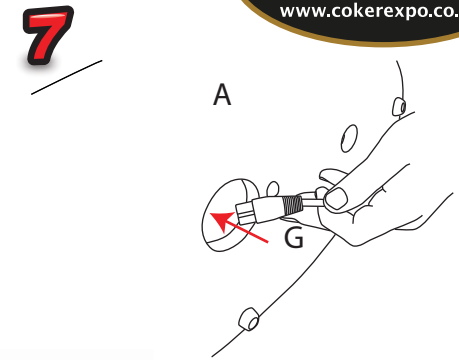
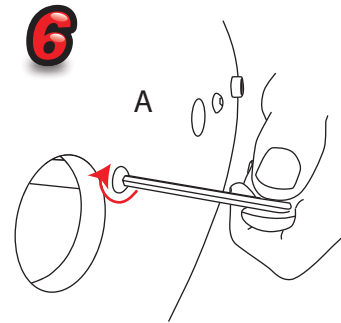
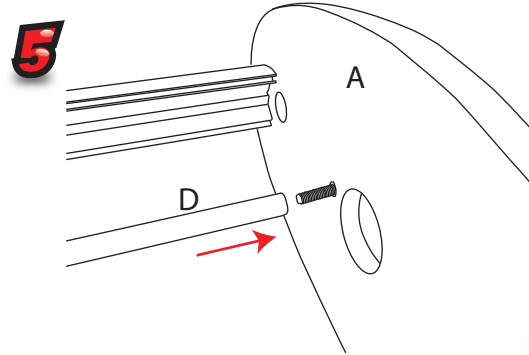
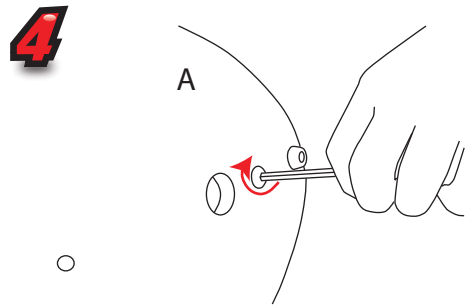
NB: D, C and G not
include with
graphic pod

kg
 8.10kg - Lightbox
 7.50kg Graphic Pod

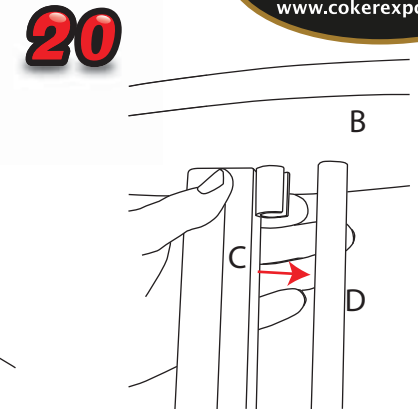
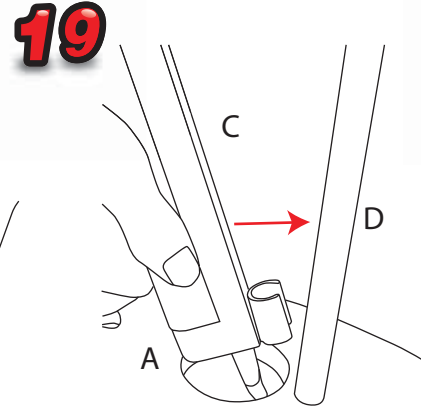
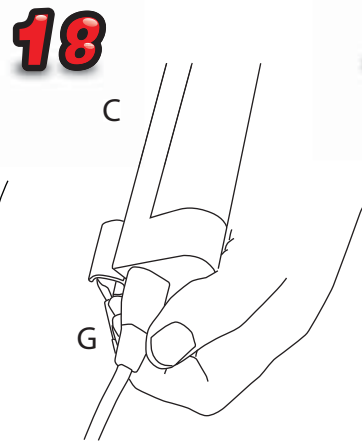
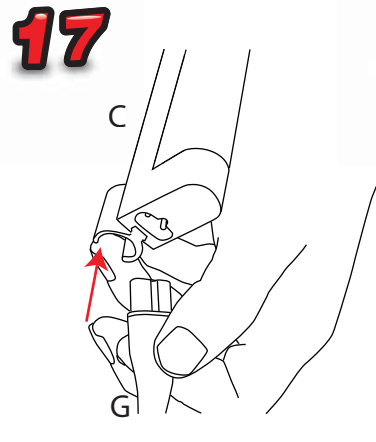
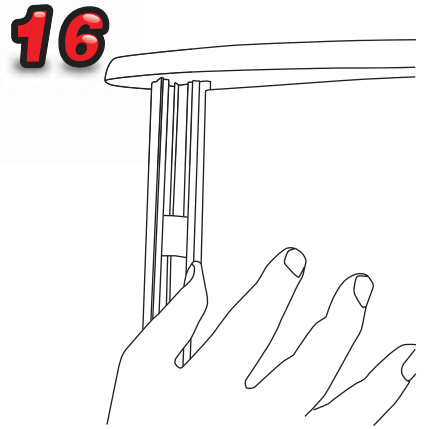
!
 Visible graphic Area :
 1000mm (h) x 910mm (w)



Totem Light box



Totem light box tower



Attaching Graphic

