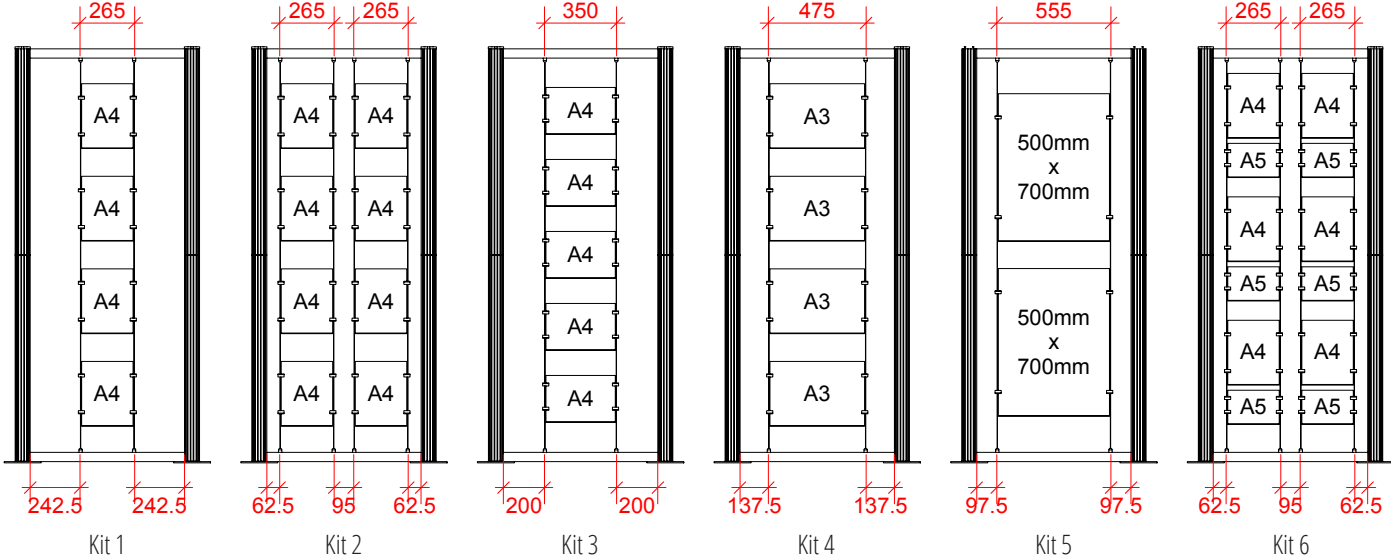


# Centro Suspended Poster Display Kits 1 to 6

## Assembly Instructions



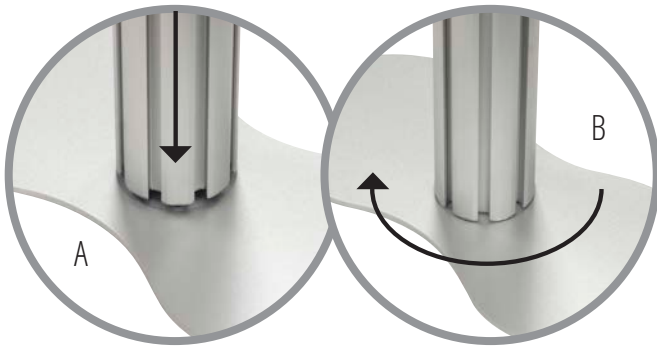
Cables need to be positioned to the dimensions below depending on which kit you have purchased.



1



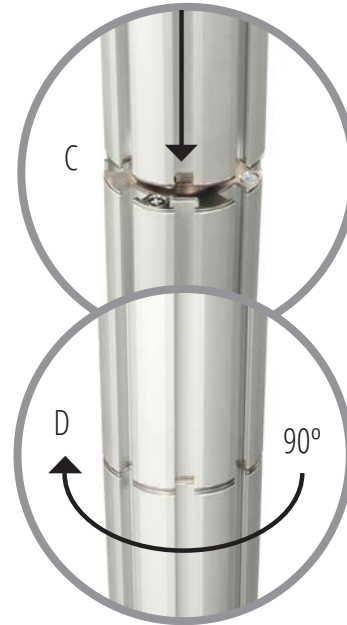
Place base plate on the floor, position lower post centrally over male fitting of base plate (A), and rotate until assembly drops into position, continue rotating clockwise through 90° to secure (B).



2

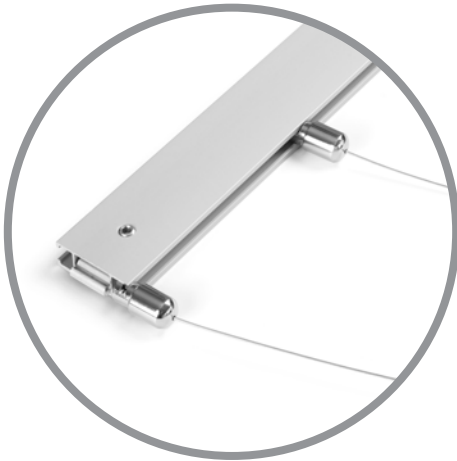


Affix upper post to lower post by positioning female end centrally over male fitting (C), and rotate until assembly drops into position, continue rotating clockwise through 90° to secure (D).



3

Slide fixing slots at one end of each of the cables into channel of profile.



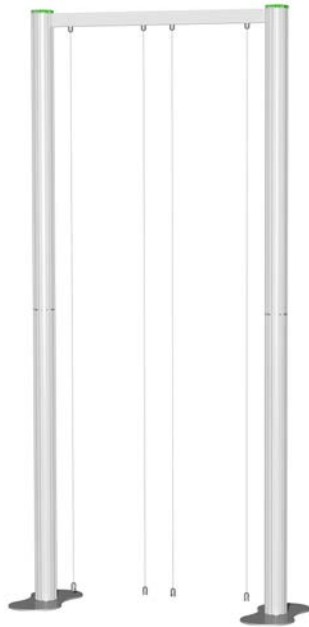
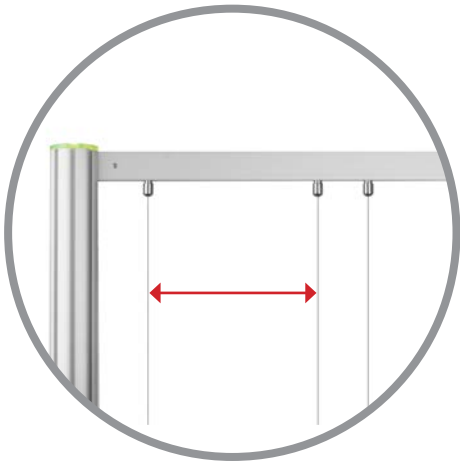
4

Firmly holding the middle of the horizontal rail with cables, raise to top of display. Slot clamp at one end of profile into post channel and tighten to secure. Repeat for opposite end.



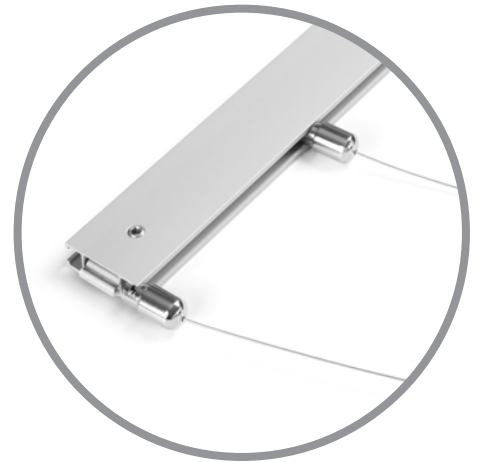
5

Position the cables centrally along profile allowing sufficient spacing inside each pair of cables you wish to display acrylic poster holders between. Please refer to page 2 for dimensions.



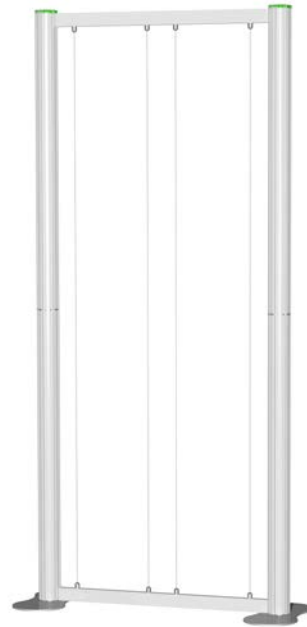
6

Slide slots at opposite end of each of the cables into channel of remaining profile, ensuring they are parallel to those at the top.



7

Tension cables by pulling bottom horizontal downwards and secure to both posts by tightening grub screws.

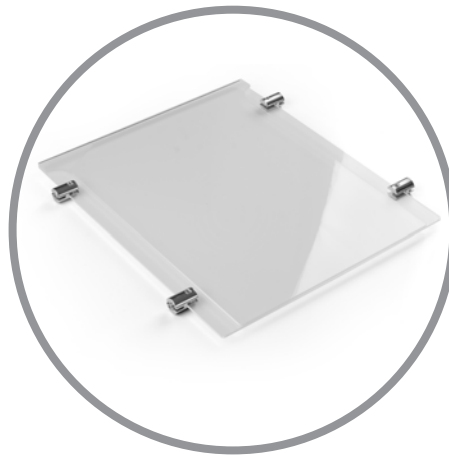


8

Attach 4x chrome connectors to each poster holder by sliding onto edge of acrylic and gently tightening.

**WARNING** – overtightening grub screws will damage poster holders.

Remove outer grub screw from chrome connectors.



9

Slide open ends of chrome connectors over cables and raise to desired display height. Re-insert grub screws and gently tighten to secure poster holders in position. Repeat for remaining poster holders to complete assembly.

