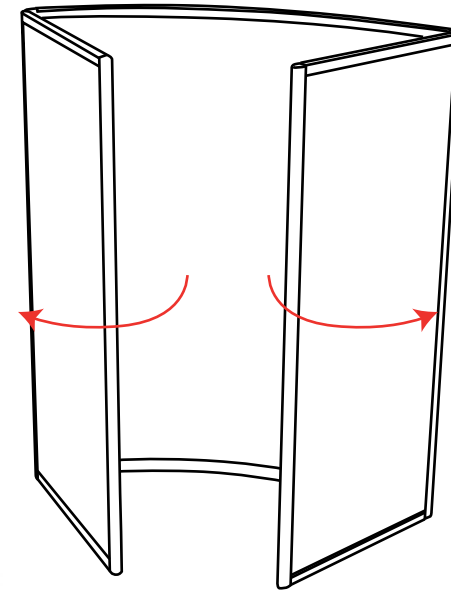


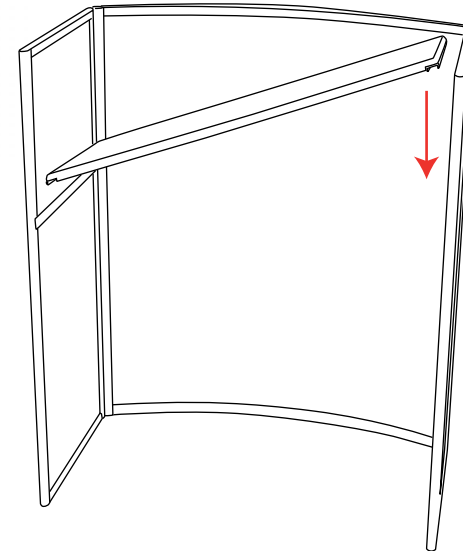
Gear Edge Curved Display Counter



1



2



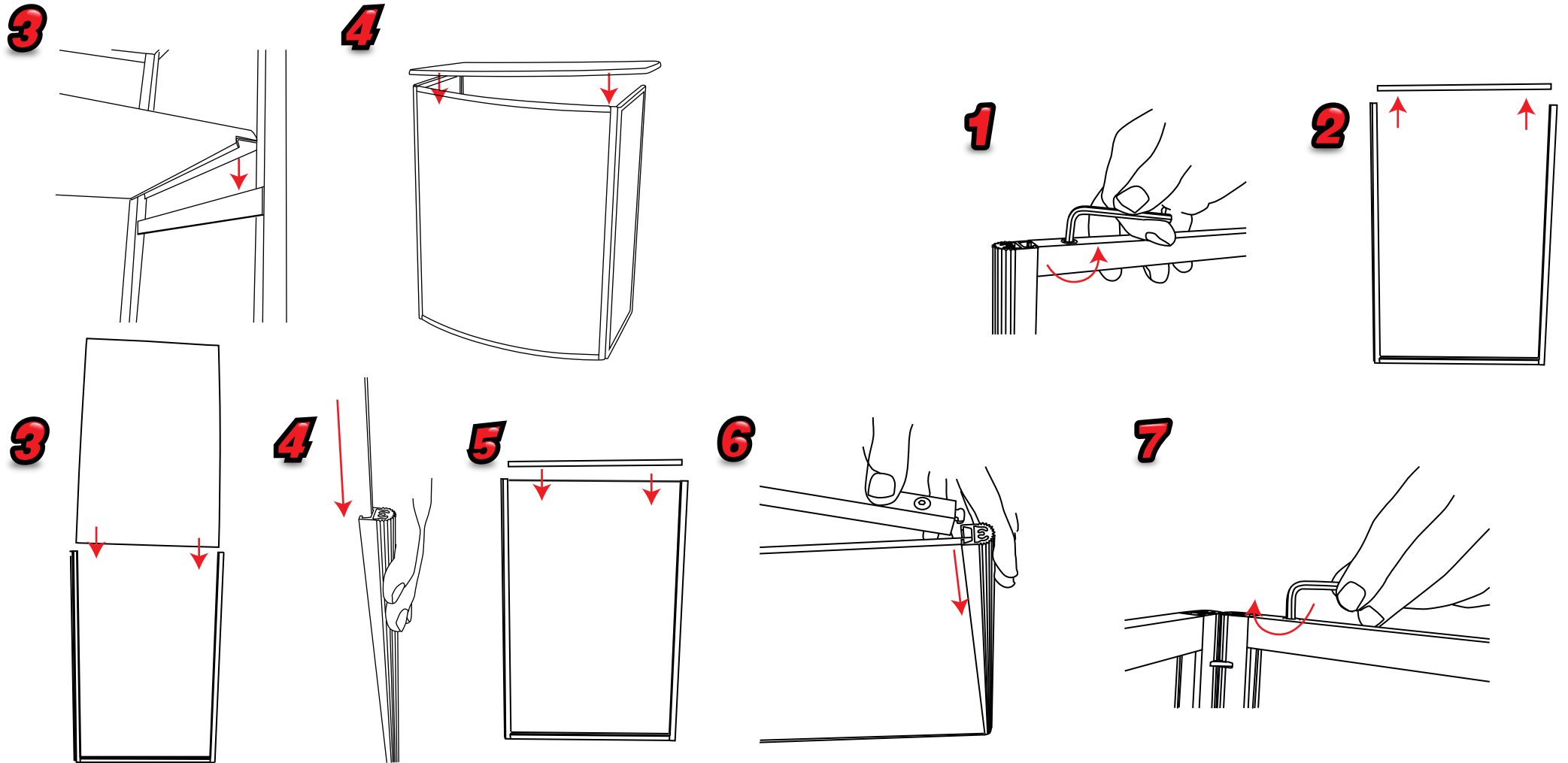
Frame only: 12.50kg
Frame With infill: 14.30kg




Visible Graphic Area
Front Panel: 867mm(h) x 712mm(w)
Side panel: 867mm(h) x 315mm(w)

Gear Edge Curved Counter

Inserting Graphics



 Included in your kit is a pack of 60 x 50mm soft hollow plastic packers which if required, can be inserted into the inner frame channel filling the void behind your graphic panel

Important- Please be careful not to place fingers near the gear edge mechanism

Gear Edge Curved Counter

Installation