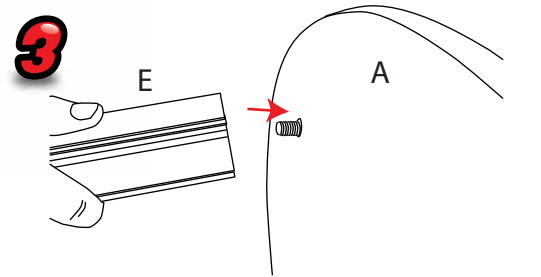
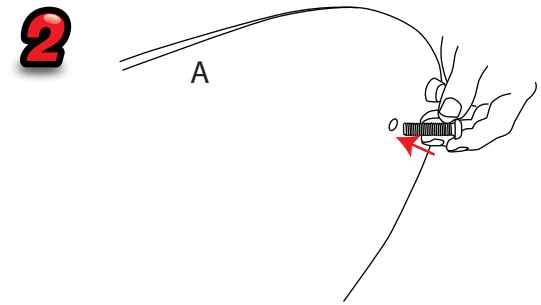
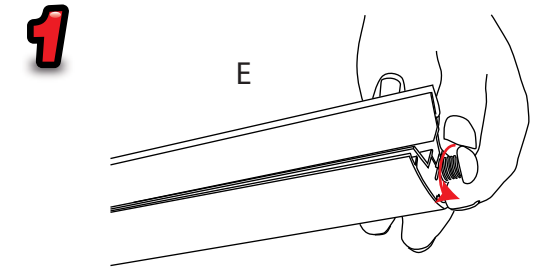
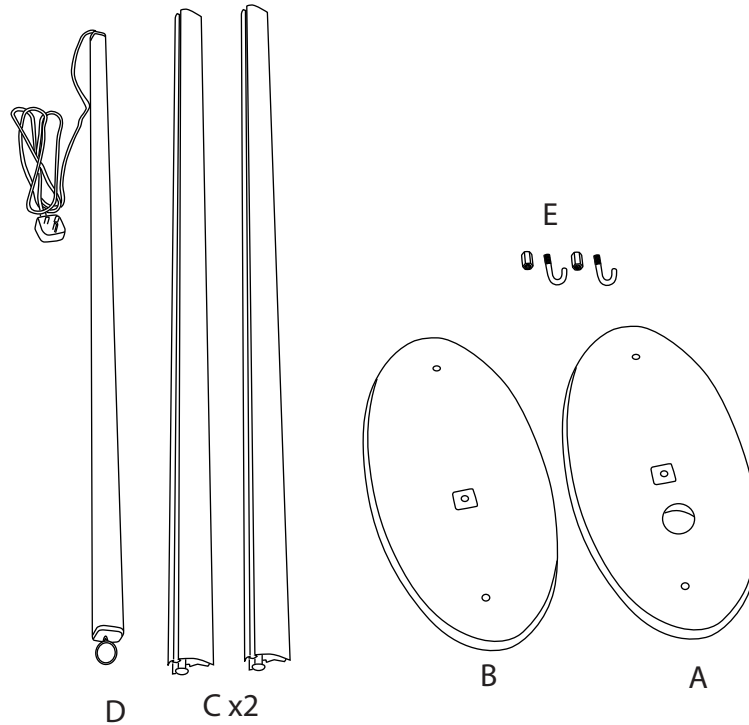
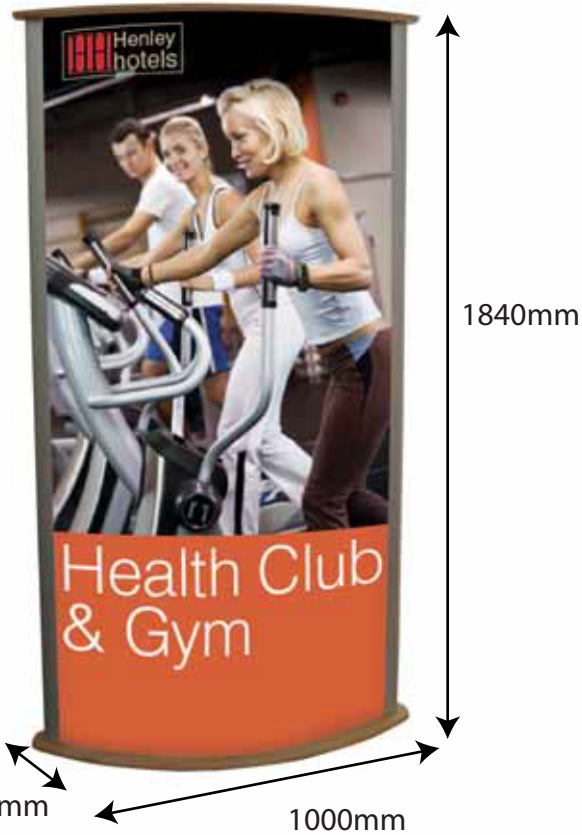



# Totem Tower Light Box



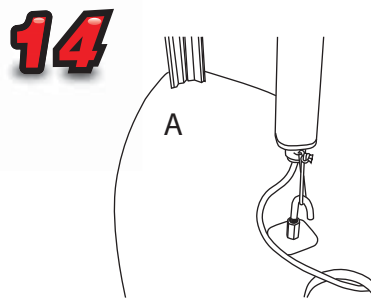
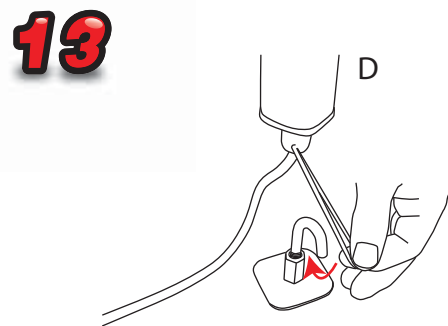
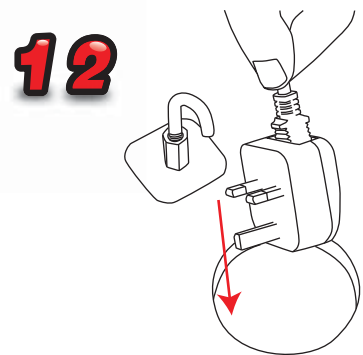
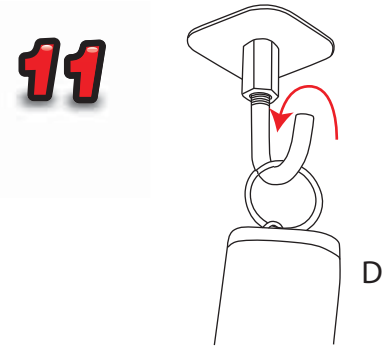
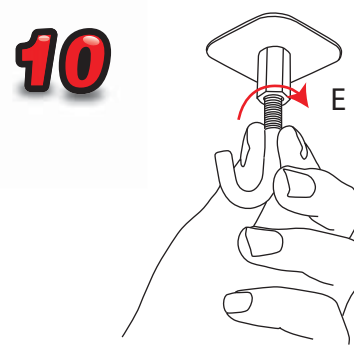
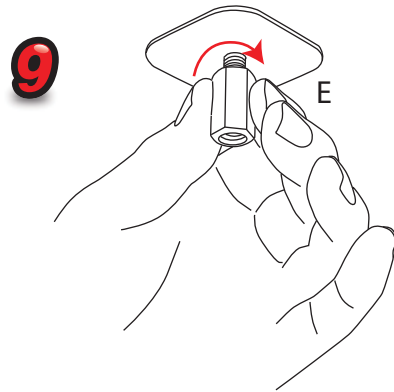
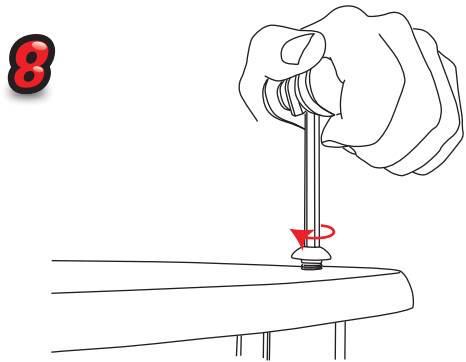
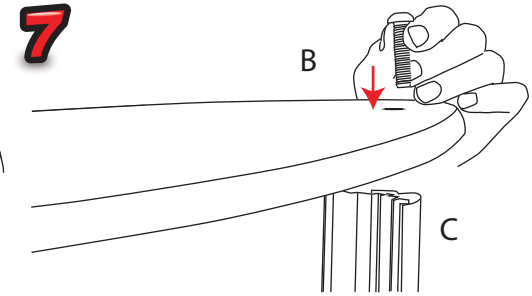
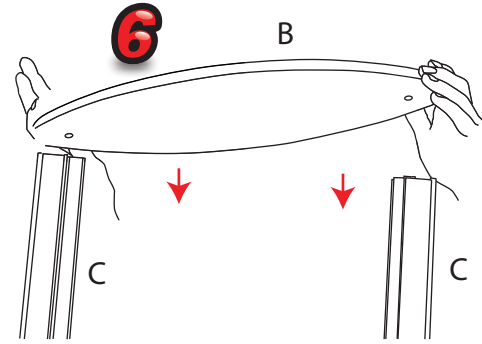
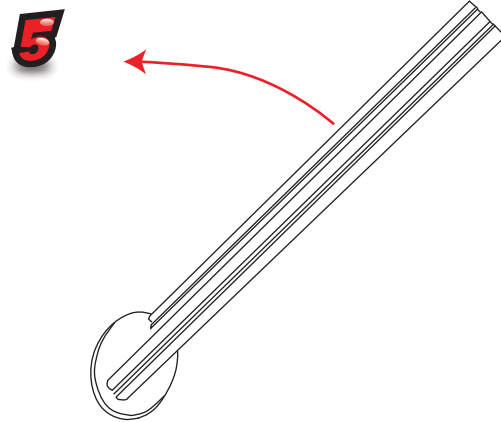
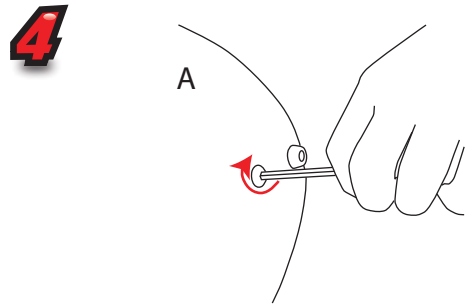
Recommended Substrate:  
2mm Opal HIPS

NB: D and E not  
include with  
graphic pod

 Visible graphic Area :  
1800 x 910

 10.80kg Lightbox  
9.20kg Graphic pod

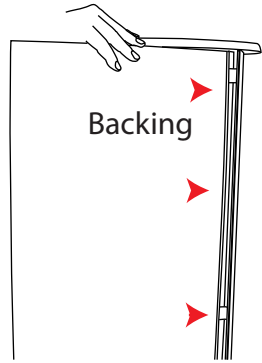
# Totem Tower Light Box



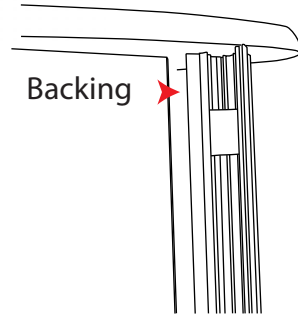
# Totem Tower Light Boxes

## Attaching Backing and Graphic

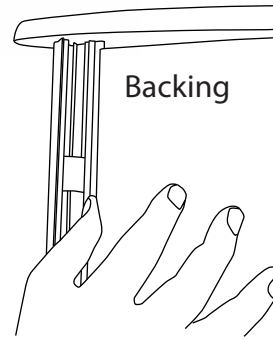
**1**



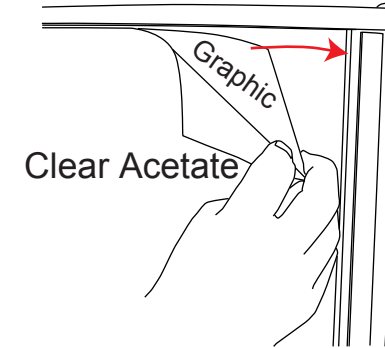
**2**



**3**



**4**



**5**

