

iPad Curve

Assembly Instructions



iPad Curve

1



WARNING – base plate is heavy.

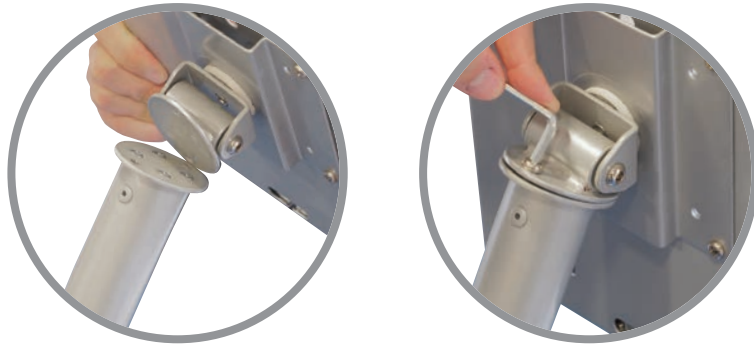
Carefully position base plate over bottom of curved upright and align central fixing hole to thread of post (ensuring the countersunk hole is uppermost). Insert and tighten large base plate screw to secure.

2



Carefully stand base and post assembly upright.

3



Align 2 holes of plate behind iPad holder to threads of the curved post plate. Insert and tighten screws to secure.

4



Unlock the iPad enclosure by inserting key into security lock and rotate 'QUARTER TURN ONLY' clockwise or counter-clockwise through 90 degrees which releases the locking pin. Return key back to original position to remove. Lift fascia out of enclosure, place iPad inside, gently press all four corners down into mouldings to hold.

5

Replace fascia and depress lock button to secure enclosure.

