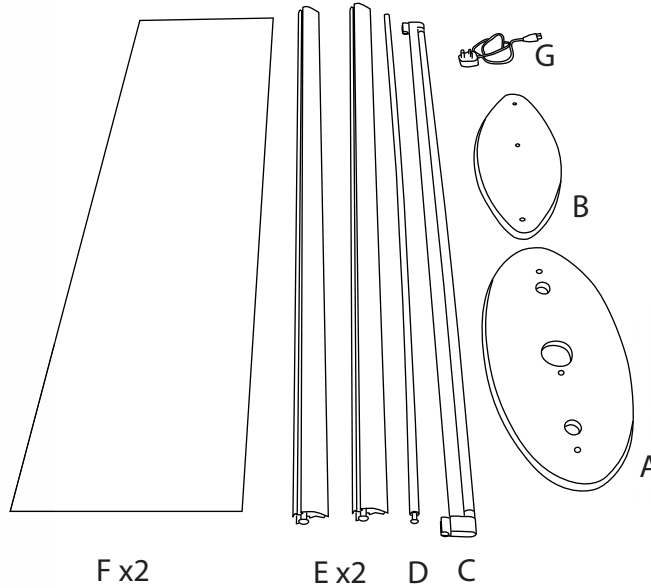




Totem Light boxes - Lite Range

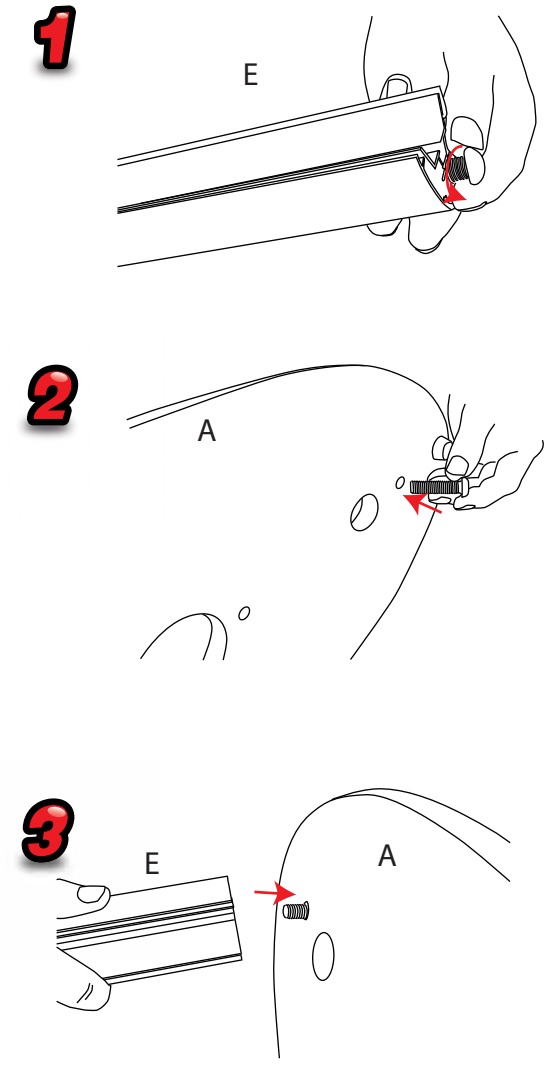


NB: D, C and G not include with graphic pod

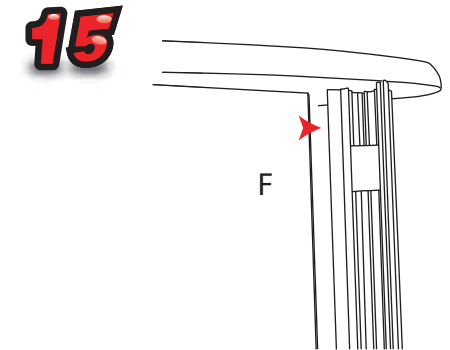
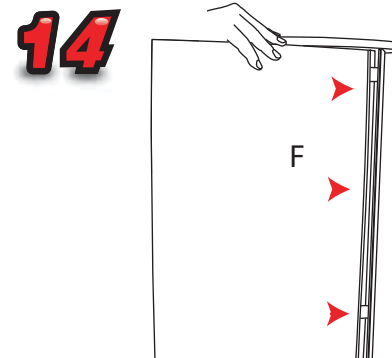
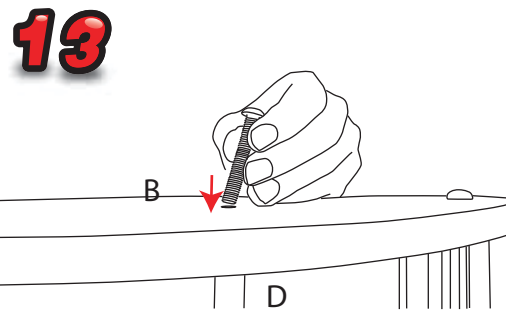
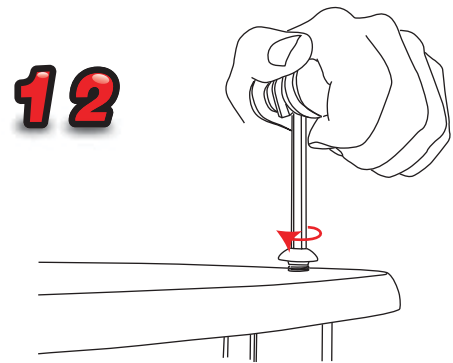
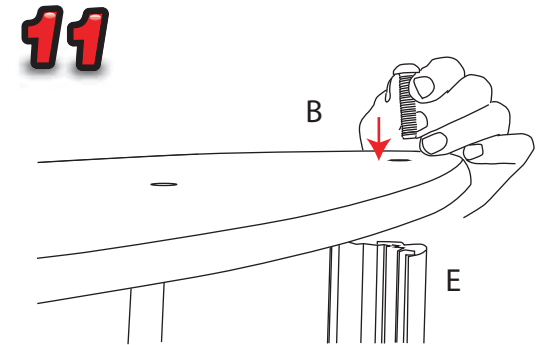
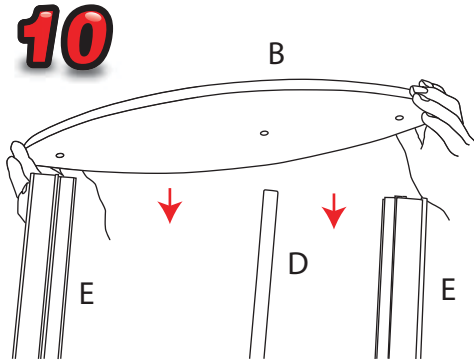
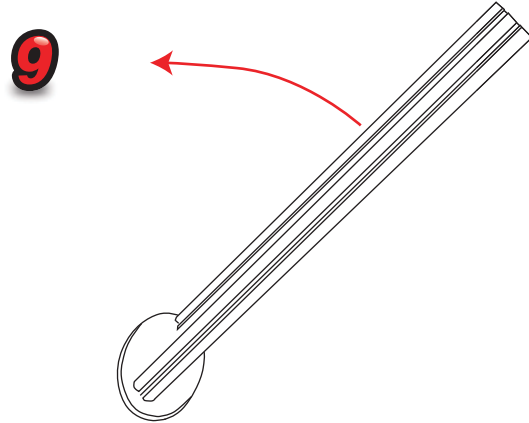
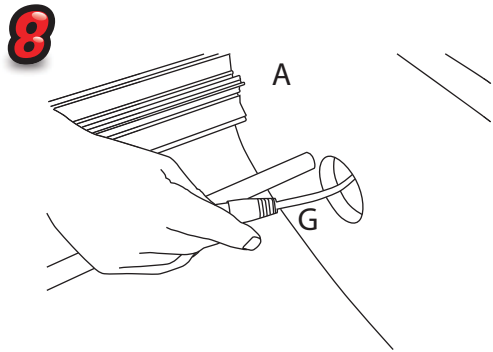
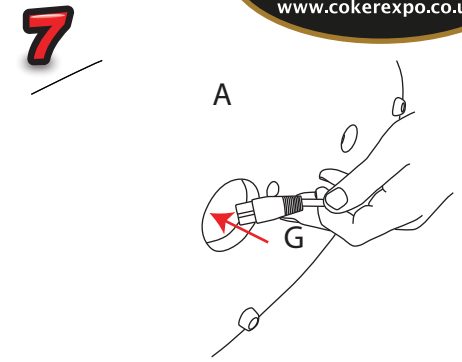
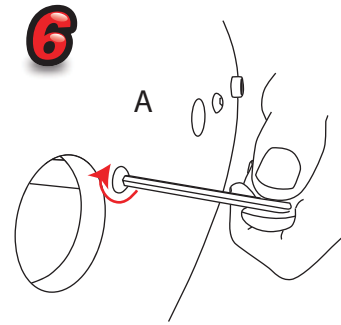
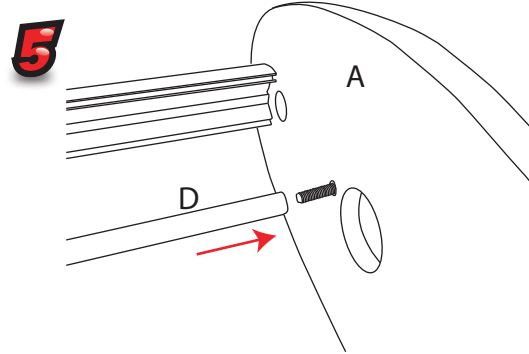
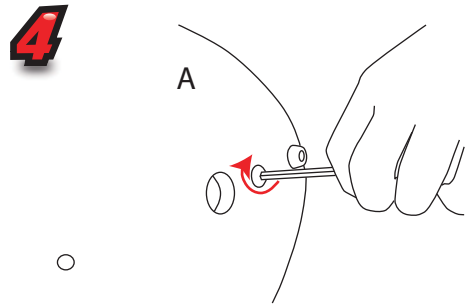
 Visible graphic Area :
 1530 x 380mm
 800 x 380mm

Recommended Substrate:
 2mm Opal HIPS

 kg
 1570mm: 11.50kg Lightbox/10.70kg Graphic pod
 840mm: 5.60kg Lightbox/4.85kg Graphic pod

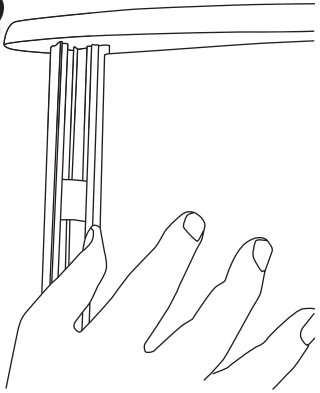


Totem Light boxes - Lite Range

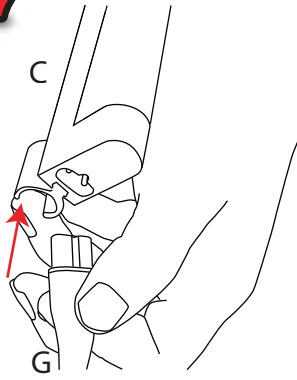


Totem Light boxes - Lite Range

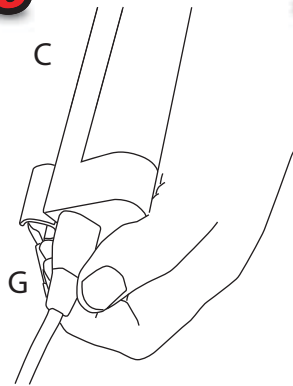
16



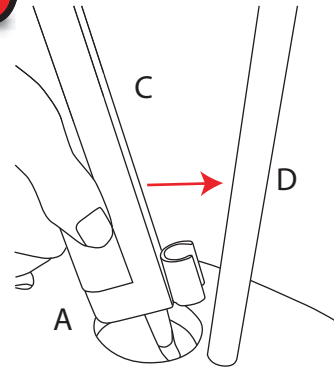
17



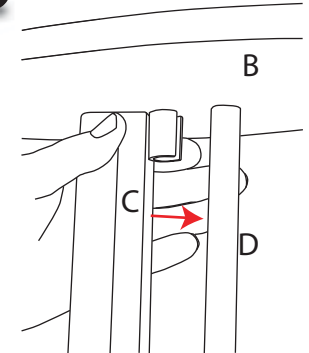
18



19

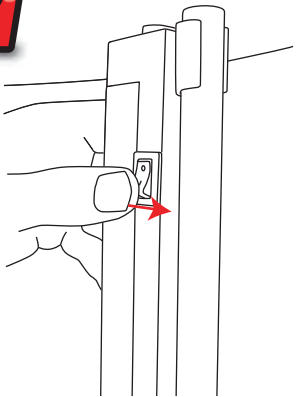


20

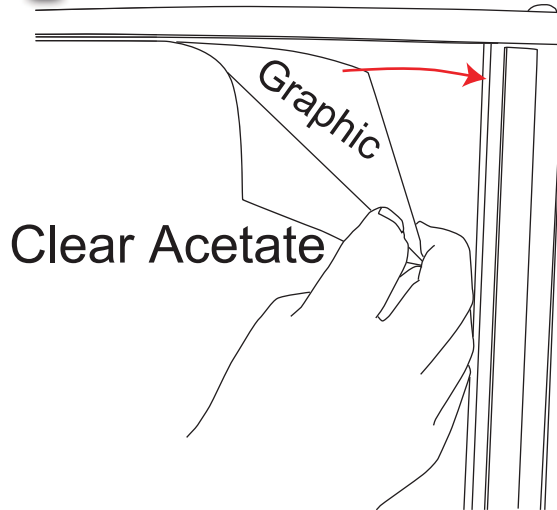


Attaching Graphic

21



1



2

