

Crescent Physique Exhibition Counter

Crescent is a stylish workstation or greeting counter constructed from MDF with high quality finish thermoformed laminated tops.



features & benefits

- Constructed from composite materials and flexible MDF tambour
- Flat packed, easy to transport and quick to assemble
- No tools required
- Load bearing up to 75kgs approx
Tops are available in Birch, Black or Silver thermoformed finishes
- Choice of Luxury Foam Backed Loop Nylon, Front Runner or Prelude fabric wrap colours
- Beech and Aluminium tambour wraps also available
- Optional internal shelf (extra cost option)
- Unit can be open or closed at the back



Crescent can be open or closed at the back

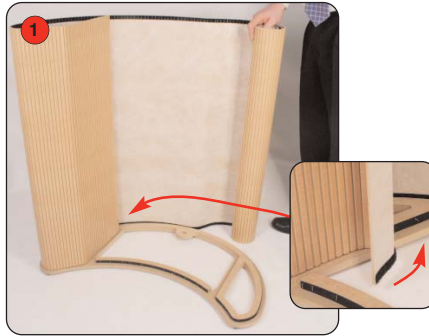
hardware specifications	wrap specifications	additional info
Overall size (h) x (w) x (d): 1000mm x 950mm x 565mm approx	Tambour Wrap dimensions (h) x (w): 970mm x 2425mm approx	Recommended carry bag/case: AB176 Carry bag/ AC347A Carry case
Weight: 14.25kg approx	If applying a graphic to the wrap, an allowance should be made to its size to accommodate material type, thickness etc.	Optional extra cost accessories: Cable management port Internal shelf
Optional internal shelf size (w) x (d): 490mm x 325 approx	Recommended visible size (h) x (w): (for front of unit)	
Useable internal shelf height: 200mm approx	970mm x 1430mm approx	

Assembly Instructions

Crescent assembly



Kit includes: Top, base and MDF tambour wrap (Optional internal shelf and poles shown)



1 Lay the base on the floor, hook fastener side uppermost. Attach the tambour wrap to the base.



2 Continue to attach the wrap. At this stage you may decide to have the unit open or closed at the back.



3 Place the top onto the wrap and secure using the hook fastener.

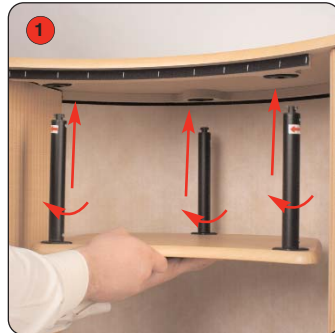


Completed Crescent workstation.

Optional Internal shelf assembly



1 Locate the twist and lock poles into the internal shelf. Ensure the arrows on the poles are all facing the same direction.



1 Locate the poles/shelf into fittings underneath the Crescent top. Rotate each pole in the arrow direction to lock the shelf in place.



Completed Internal shelf.

