

Cokerexpo FABRIC BANNER FRAME SYSTEM

High quality aluminum profiles used in all our frame works
Designed to take soft stretch fabric with silicone bead edges.

- 44mm / 120mm and 150mm wide profiles
- Options for wall mounting and freestanding with feet
- Standard display frames and also back lit for light boxes
- Standard sizes and custom on request
- Supplied in sections, requires assembly once on site
- Back lit frames use Led lights
- Single and double sided possible

Fabric banner display frames

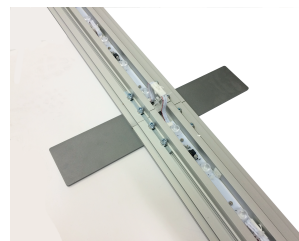
Assemble your frame work on the floor



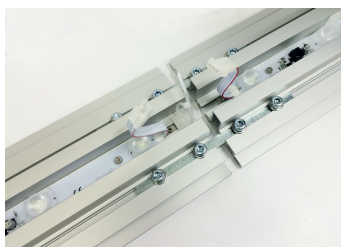
Slide the pieces together and lock up with an allen key



Continue adding sections until complete



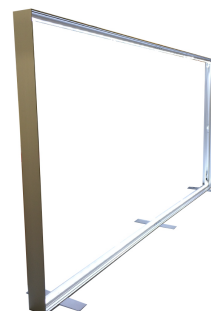
If your frame is free standing add the feet



With light boxes frames you will need to connect up all of the push fit cables.



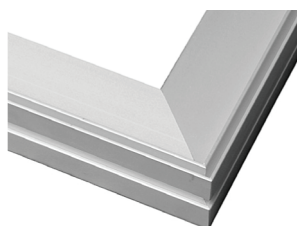
Large width frames will have support poles that lock into place with an allen key.



Fully assemble the frame work.



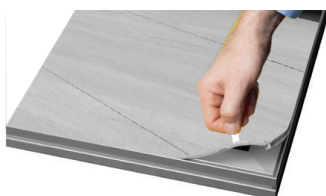
We advise you keep your fabric banners on a core.



Take a corner of your fabric graphic and feed it into the edge of the profile work all the way around the frame.



The completed tension fabric display frame set up and ready for your event.



To remove take the corner with the tag and gently pull away from the frame, work around all edges.



We offer a range of bags to protect your frame work sections.