

Retractable Banner Stand Setup

Portable roller banner stand solutions from Coker Exhibition Systems, Hook, Hampshire, RG27 9NY

User Guide



1. Assemble pole by connecting the attached sections together. Do NOT twist the pole sections once assembled as this can jam them together.



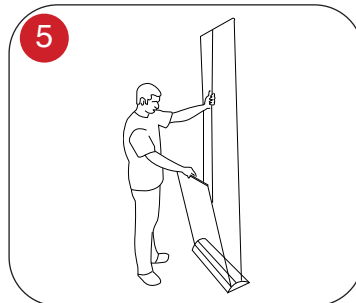
2. Place the base unit on the floor put the assembled pole into the socket hole of the roller banner stand's base, tilt the unit back. Grip the header bar of the graphic and slowly pull it up out of the unit.



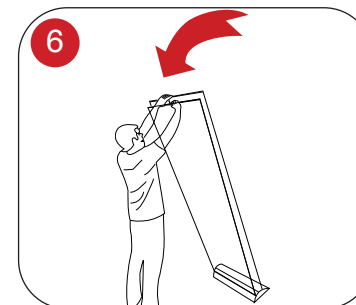
3. Still with the unit leaning back, pull the graphic to the top and connect it to the top of the pole



4. Once fully extended and connected return the banner stand to an upright position.



5. To display the second graphic, on a twin, stand facing the pole and pull out the second graphic from the base.



6. Lean the unit towards you and attach the rail into the top of the pole. Hold the banners themselves to raise the stand into an upright position.

If your stand has swing-out feet, they should not be swung-out until the banner(s) is up, as they will otherwise prevent you from leaning the stand towards you.

System Components

Stand with graphic(s) - 1
Pole - 1 or more

Note:

Wider stands with more than one pole are more easily assembled by two people.

All of our retractable banner stands work in the same way.

Always be careful when raising or lowering a banner that you do not scrape the banner edge against the stand end-plates. Simply keep the banner away from the end-plates to avoid this by guiding it centrally.